

# LUCE ARC

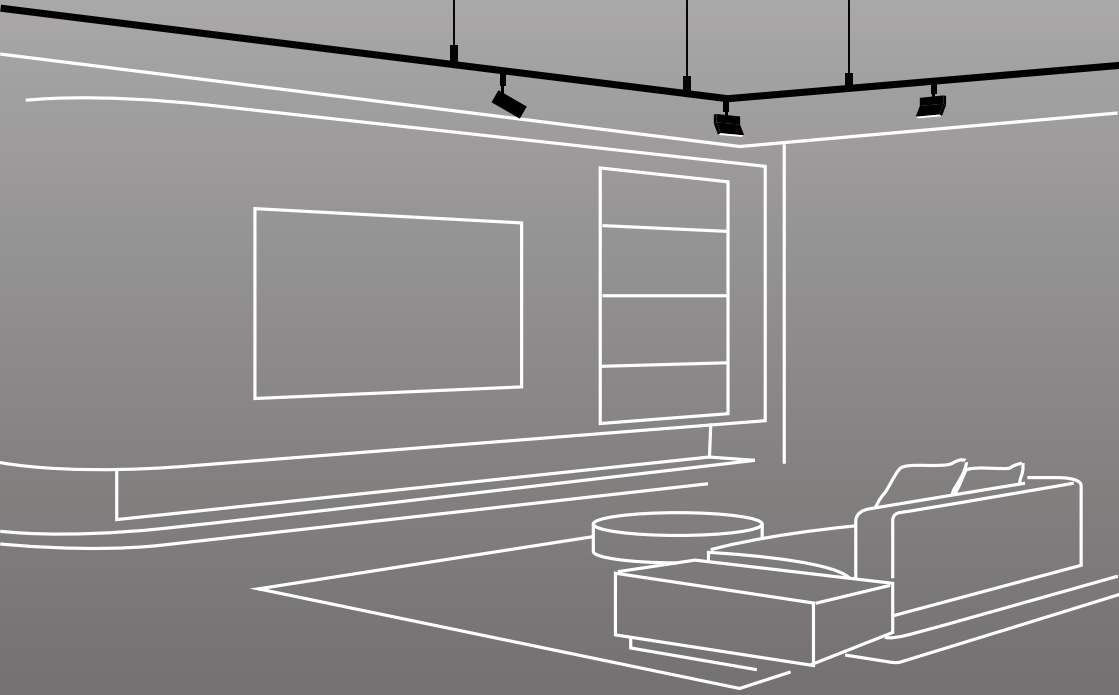
Collection







lighting that  
adapts to you  
and your design



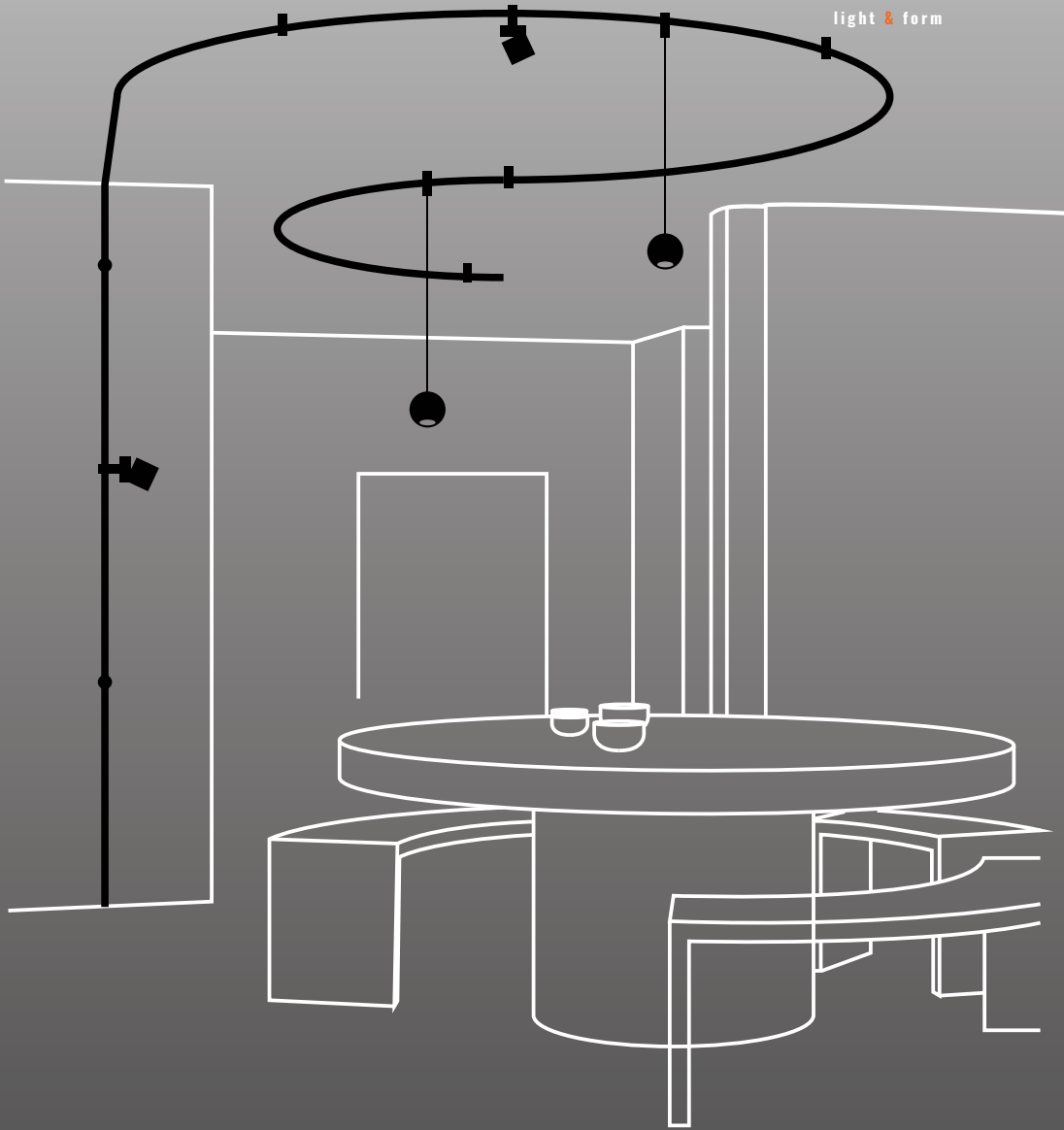


lighting that  
is built around  
your space





storytelling  
through  
lighting design





# Office





# Rest Area

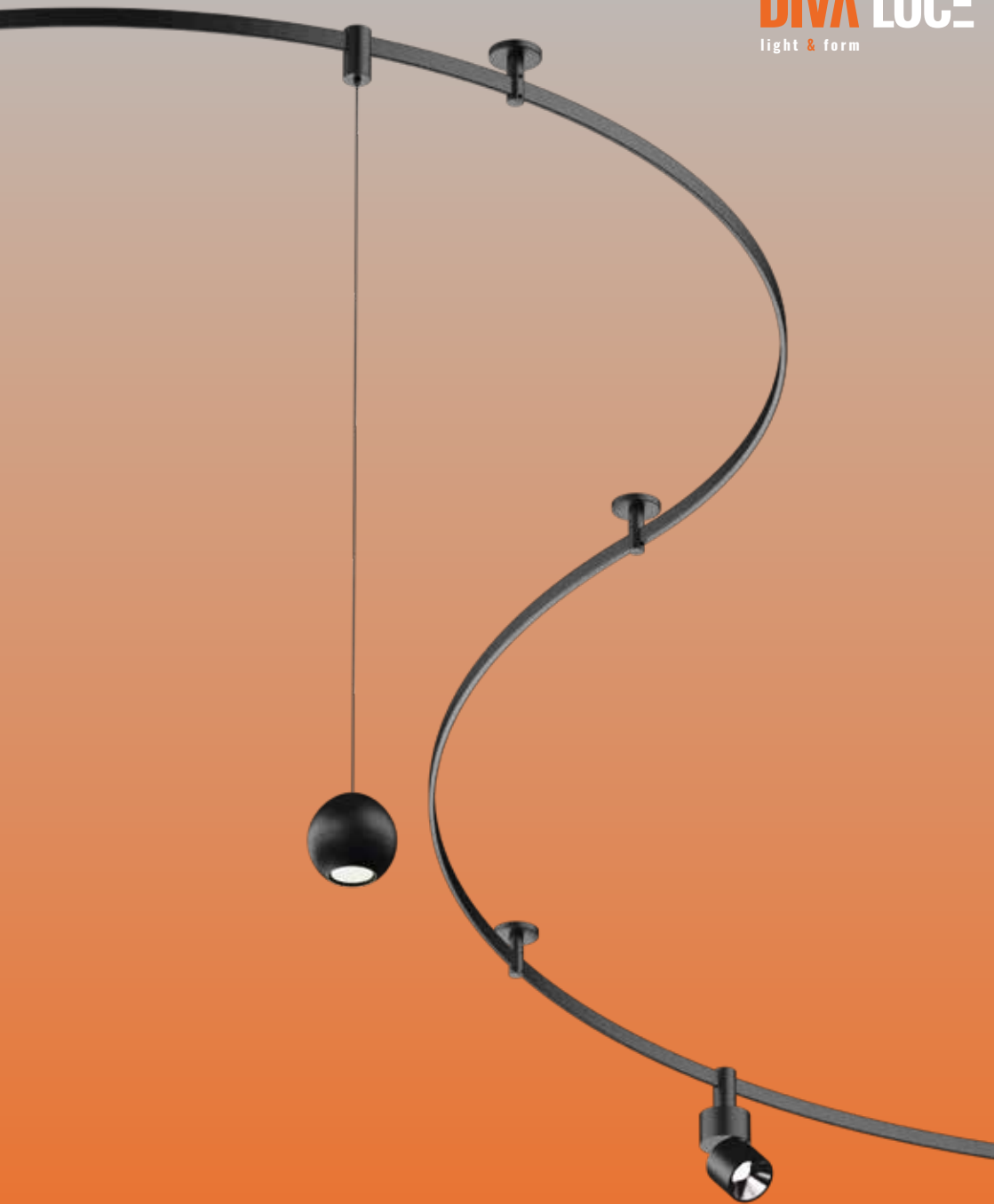




# Art Gallery



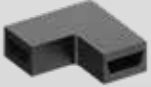




Seamless connection from  
wall to ceiling.





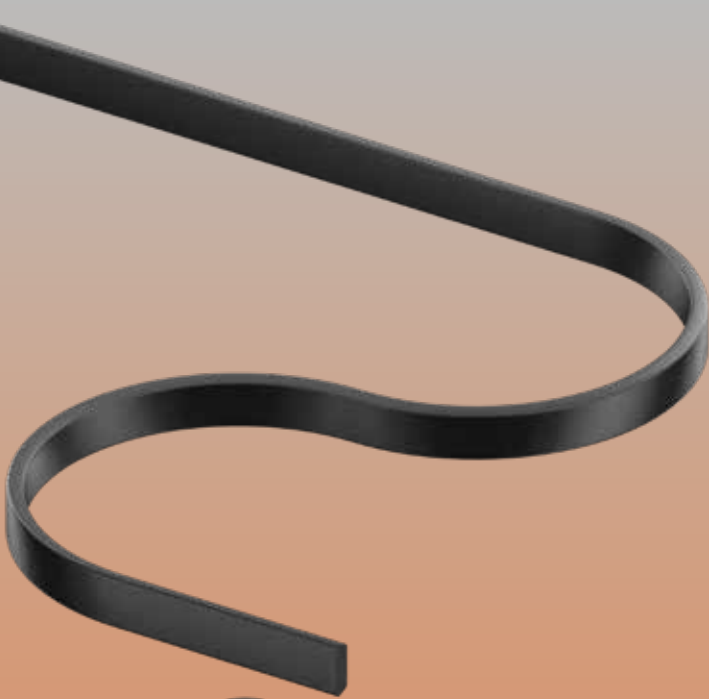


Corner Connector



Straight Connector





The LUCE Arc lighting technology is patented, paving the way for a new, extremely flexible way of lighting.

It's extremely flexible and safe installation, allowing you to install LUCE Arc in any space.



3000K

6000K





INTEGRATION:  
LUCE Bridge connecting  
to LUCE Arc.

INTEGRATION:

LUCE Arc connecting  
to LUCE Lego.





INTEGRATION:  
LUCE Arc connecting  
to LUCE Rail.

INTEGRATION:  
LUCE Arc connecting  
to LUCE Mac.





# Example 1



# Product List



1

LA-003

ARC Track

x2

---



2

LA-DD2-7W

CONE Pendant Arc

x4

---



3

LA-G25-250

TUBE Arc

x2

---



4

LA-SD1-10W

PICO Spot Arc

x10

---



# Example 2

# Product List



1

LA-003

ARC Track

x2

---



2

LA-G25-250

TUBE Arc

x1

---



3

LA-CD-07-12W

BALL Pendant Arc

x3

---



4

LA-BXQD-21-6W

MILA Blade Arc

x1

---



5

LA-BXQM-12-12W

MILA Diffuser Arc

x2

---



# Example 3

# Product List



1

LA-003

LUCE Arc Track x1

---



2

LA-CD-07-12W

BALL Pendant Arc x4

---



3

LA-SP-011-12W

LUNA Spot Arc x6

---

# LUCE ARC

LUCE Arc is a new, innovative technology, that isn't compatible with just any light. Below you will find all of the lighting fixtures and accessories currently available for the LUCE Arc range, from tube lights to pendant lights and many more options that will allow you to unleash your creativity, and fill your space with unlimited designs.



## LUNA Spot Arc

---

<b>Model</b>	LA-SP-011-12W	12W	D50*130mm
	LA-SP-012-18W	18W	D65*156mm

---

<b>Angle</b>	15°/24°/36°		
<b>CRI</b>	Ra≥90		
<b>CCT</b>	3000K/3500K/4000K/5000K		
<b>Material</b>	Aluminum		

---



## MILA Spot Arc

---

<b>Model</b>	LA-SP-021-7W	7W	D45*100mm
	LA-SP-022-12W	12W	D55*115mm
	LA-SP-023-18W	18W	D65*135mm

---

<b>Angle</b>	15°/24°/36°
<b>CRI</b>	Ra≥90
<b>CCT</b>	3000K/3500K/4000K/5000K
<b>Material</b>	Aluminum

---



## ZOOM Spot Arc

---

<b>Model</b>	LA-SP-032-10W	10W	D55*115mm
	LA-SP-033-18W	18W	D65*135mm

---

<b>Angle</b>	Adjustable 10°-55°
<b>CRI</b>	Ra≥90
<b>CCT</b>	3000K/3500K/4000K/5000K
<b>Material</b>	Aluminum

---



## SNAP Spot Arc

<b>Model</b>	LA-DW02-R72-12W	12W	D72*108mm
	LA-DW02-R92-18W	18W	D92*130mm
<b>Angle</b>	15°/24°/36°		
<b>CRI</b>	Ra≥90		
<b>CCT</b>	3000K/3500K/4000K/5000K		
<b>Material</b>	Aluminum		



## PICO Spot Arc

<b>Model</b>	LA-SD1-10W	10W	Φ67*93MM
<b>Angle</b>	24°		
<b>CRI</b>	Ra≥90		
<b>CCT</b>	3000K/3500K/4000K/5000K		
<b>Material</b>	Aluminum		





### MILA Blade Arc

<b>Model</b>	LA-BXQD-21-6W	6W	L112*W23*H87mm
	LA-BXQD-22-12W	12W	L220*W23*H87mm
<b>Angle</b>	24°/36°		
<b>CRI</b>	Ra≥90		
<b>CCT</b>	3000K/4000K/5000K		
<b>Material</b>	Aluminum		



### MILA Diffuser Arc

<b>Model</b>	LA-BXQM-11-6W	6W	L118*W23*H87mm
	LA-BXQM-12-12W	12W	L231*W23*H87mm
<b>Angle</b>	100°		
<b>CRI</b>	Ra≥90		
<b>CCT</b>	3000K/4000K/5000K		
<b>Material</b>	Aluminum		



## TUBE Arc

<b>Model</b>	LA-G25-200	18W	Φ32.3*2000mm
	LA-G25-250	23W	Φ32.3*2500mm
	LA-G25-500	45W	Φ32.3*5000mm

<b>Angle</b>	360°
<b>CRI</b>	Ra≥90
<b>CCT</b>	3000K/4000K/6000K
<b>Material</b>	Aluminum+Silicone



## SHUTTLE Pendant Arc

<b>Model</b>	LA-CD-05-6W	6W	D60*120mm
--------------	-------------	----	-----------

<b>Angle</b>	24°/36°
<b>CRI</b>	Ra≥90
<b>CCT</b>	3000K/3500K/4000K/5000K
<b>Material</b>	Aluminum



## BALL Pendant Arc

---

<b>Model</b>	LA-CD-07-12W	12W	D100*100mm
<b>Angle</b>	Adjustable 10°-55°		
<b>CRI</b>	Ra≥90		
<b>CCT</b>	3000K/3500K/4000K/5000K		
<b>Material</b>	Aluminum		

---



## CONE Pendant Arc

---

<b>Model</b>	LA-DD2-7W	12W	Φ195*180mm
<b>Angle</b>	180°		
<b>CRI</b>	Ra≥90		
<b>CCT</b>	3000K/3500K/4000K/5000K		
<b>Material</b>	Aluminum+PC		

---



## ARC Track

---

<b>Model</b>	LA-003	/	23.8*7.5mm
<b>Angle</b>	/		
<b>CRI</b>	/		
<b>CCT</b>	/		
<b>Material</b>	Silicone		

---



## LUCE Arc Support

---

<b>Model</b>	LA-GDJ	/	D60*78mm
<b>Angle</b>	/		
<b>CRI</b>	/		
<b>CCT</b>	/		
<b>Material</b>	Aluminum		

---



## LUCE Arc Power Clamp

---

<b>Model</b>	LA-TDT-1m-2X	/	D32.3*65mm
<b>Angle</b>	/		
<b>CRI</b>	/		
<b>CCT</b>	/		
<b>Material</b>	Plastic		

---



## LUCE Arc End Cap

---

<b>Model</b>	LA-04B	/	50*32*20mm
<b>Angle</b>	/		
<b>CRI</b>	/		
<b>CCT</b>	/		
<b>Material</b>	Plastic		

---



## LUCE Arc 90° Bend

<b>Model</b>	LA-03B	/	61*61*20mm
<b>Angle</b>	/		
<b>CRI</b>	/		
<b>CCT</b>	/		
<b>Material</b>	Plastic		



## Power Supply Arc

<b>Model</b>	LA-SP-021-7W	7W	D45*100mm
	LA-SP-022-12W	12W	D55*115mm
	LA-SP-023-18W	18W	D65*135mm
<b>Angle</b>	15°/24°/36°		
<b>CRI</b>	Ra≥90		
<b>CCT</b>	3000K/3500K/4000K/5000K		
<b>Material</b>	Aluminum		

**DIVA** LUCE

light & form

[www.divaluce.com](http://www.divaluce.com)

LUCE ARC